

**BONECO**  
healthy air

TRADITION SINCE 1956  
 A SWISS COMPANY

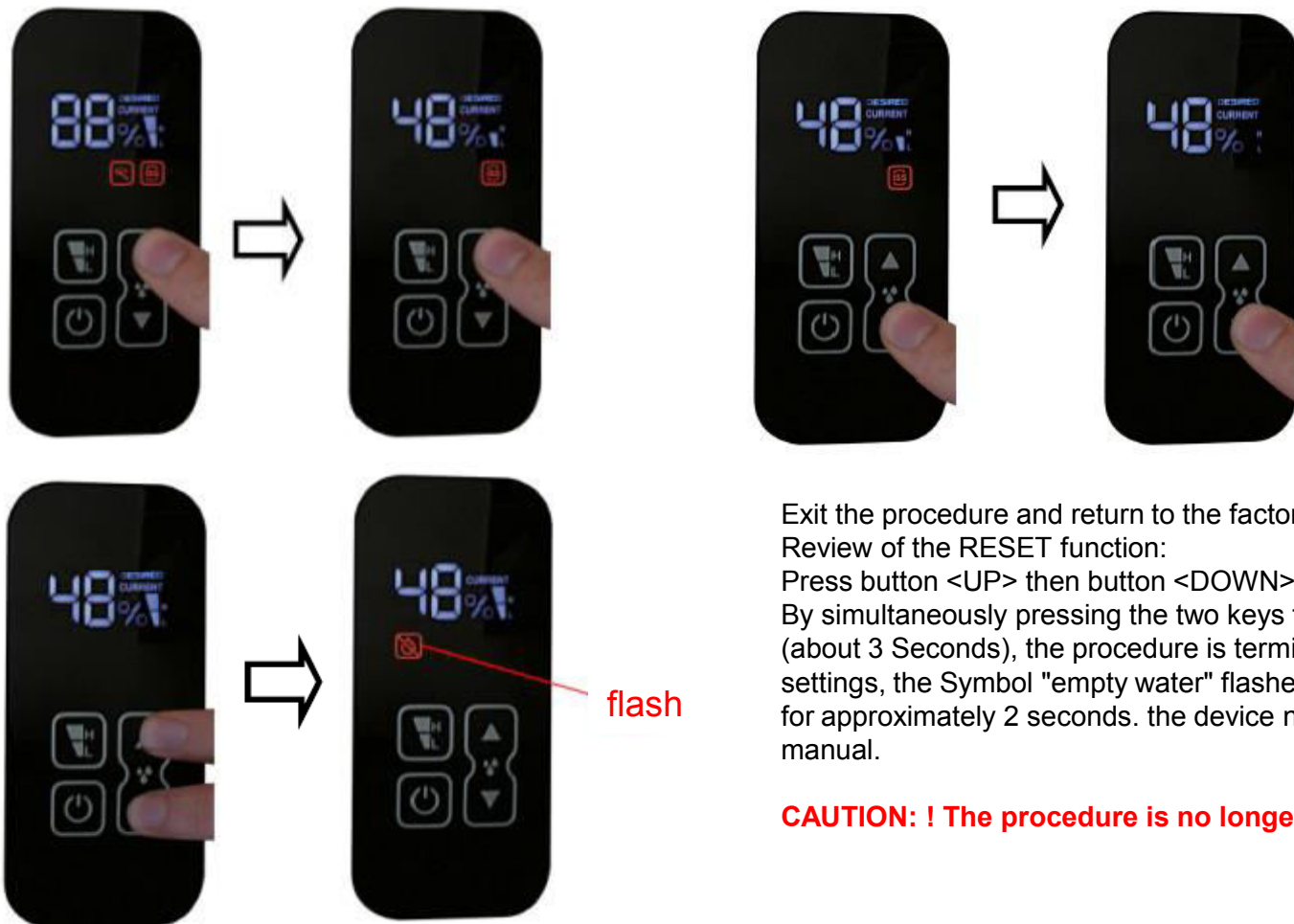
**Spare-Parts  
Air Washer W490**



## Contents

Topic	Page
Make the delivery status	03
Dismount instructions	04
Exploded - View	06
Spare Parts	07

## Make the delivery status



Exit the procedure and return to the factory default state  
Review of the RESET function:

Press button <UP> then button <DOWN>

By simultaneously pressing the two keys fields on the right side (about 3 Seconds), the procedure is terminated and set to the factory settings, the Symbol "empty water" flashes and a long beep sounds for approximately 2 seconds. the device now works as per instruction manual.

**CAUTION: ! The procedure is no longer accessible!**

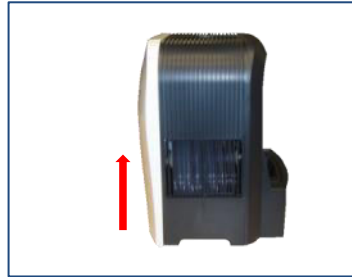
## Dismount instructions



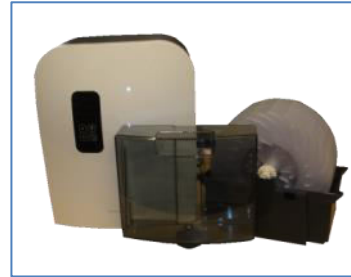
W490



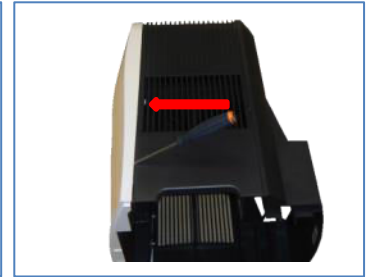
Remove the tank



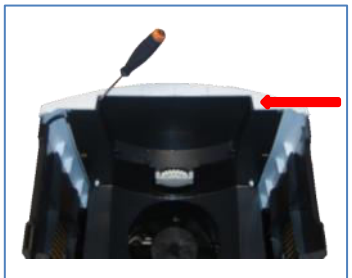
Take top of tub



Top, tub, tank, disc



Carefully remove front



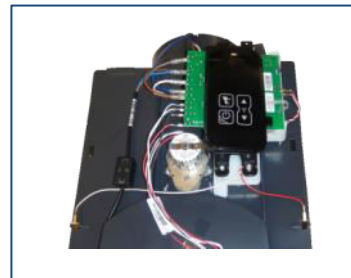
Place the unit upside down and resolve on both sides



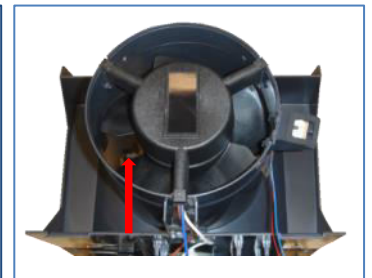
Return device back and loosen the two tabs on the inside



Turn the device and remove the two tabs on the back wall



Main PCB, gear motor and Cord

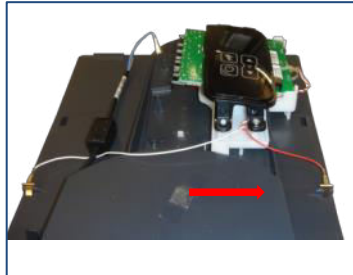


Remove the fan motor and remove from the print

## Dismount instructions



Loosen the two screws with geared motor



Remove sensor cable



Remove humidity sensor



Solve PCB from housing



PCB, housing, humidity sensor with bracket

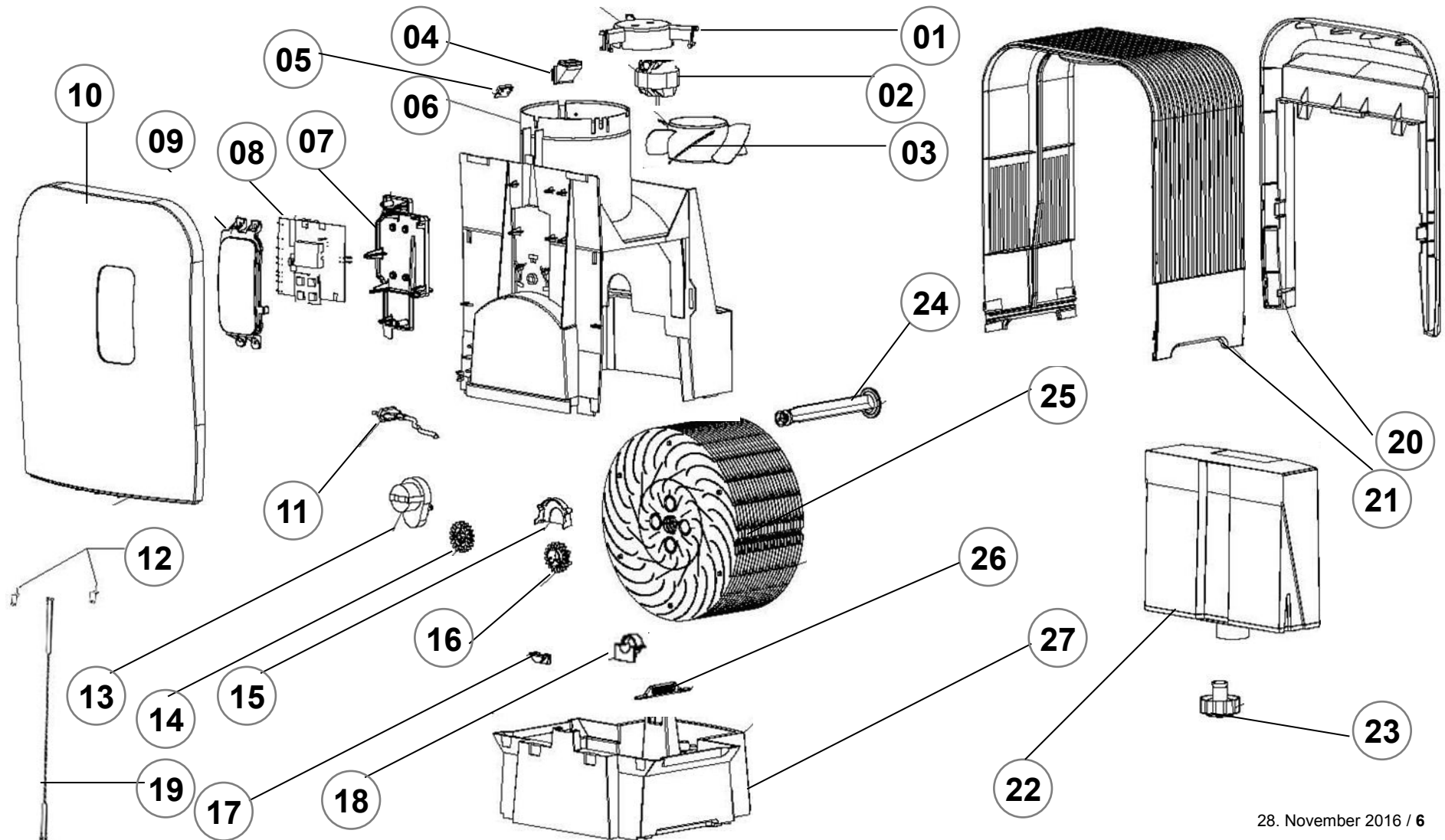


Fan motor, gear motor, sensor cable



Rear, front, housing

## Exploded - View



## Spare Parts

Pos.	Item	Description	
01/02/03	23476	fan motor complete W490 230V	
04	n/a	mount humidity sensor W490	
05	33580	humidity sensor W490	
06	n/a	Middle part W490	
07	n/a	Print bracket W490	
08	37396	Main PCB W490	
09	n/a	Select a disc W490	
10	39902	front panel W490 Boneco white W490	
11	n/a	power cable	
12	n/a	contact sheet right / left W490	
13	24484	gear motor W490	
14	18319	gear drive W490	

ACC = Accessories N/A = not available, prices see separate price list

## Spare Parts

Pos.	Item	Description	
15	18895	gearwheel cover W490	
16	18318	sprocket to hub W490	
17	19150	slide bearing front W490	
18	18891	slide bearing back W490	
19	n/a	contact sheet W490	
20	34895	rear panel anthracite W490	
21	34782	grid anthracite W490	
22/23	33213	water tank W490	
23	18919	tank cap	
16/24/25	33722	disc ass. comb structured W490	
26	Acc	ISS	
27	34976	base W490	

ACC = Accessories N/A = not available, prices see separate price list