

BONECO
healthy air

TRADITION SINCE 1956
 A SWISS COMPANY

**Spare-Parts
Air Washer W2055D**



Display and functions



By simultaneously pressing the two keys fields on the right side (about 3 seconds) is set the device to factory settings. A long beep will sound for about 2sec. The unit now works as per instruction manual.

IMPORTANT: !!! The procedure is no longer accessible !!!

Dismount instructions



W 2055 D



Remove the tank



Take top of tub



Upper part tub, tank, disc



Loosen cover on both sides



Remove the fan blade



Loosen front on both sides



Front ,cover, fan blade

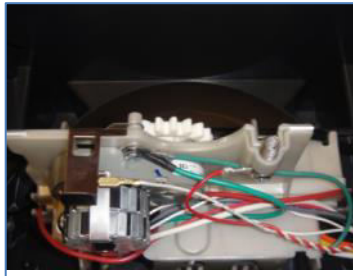


Print solve housing



Invert device and solve all 4 screws

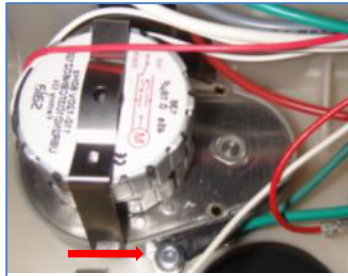
Dismount instructions



interior



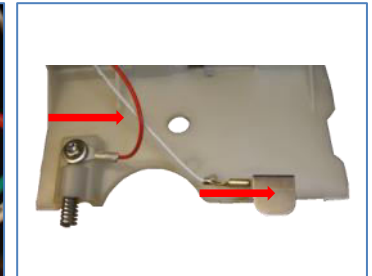
Remove gear assemblies holder



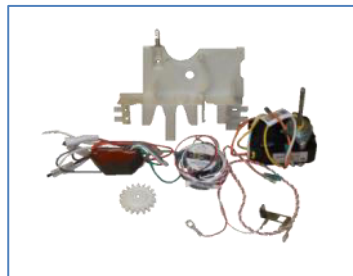
Gear motor with two screws solve



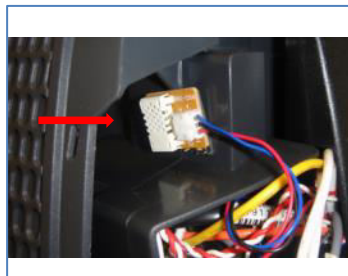
Take from the ionizer assembly bracket



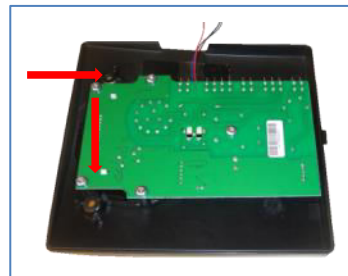
Remove contact spring and cable



Holder assemblies, ionizer, gear, gear motor, fan motor, contact spring with cable



Remove moisture sensor

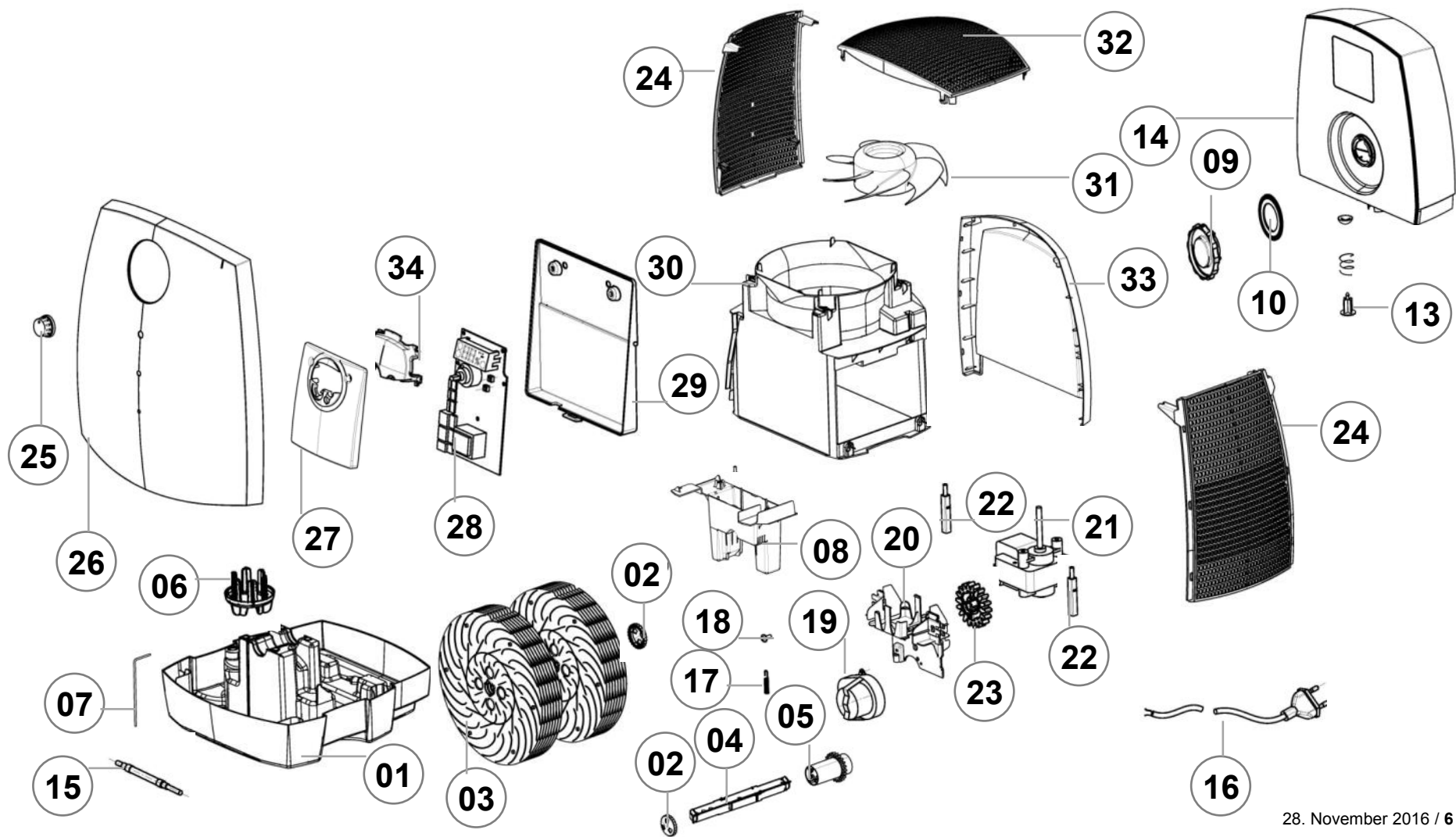


Print screws from the housing



PCB 2055D

Exploded view



Spare Parts

Pos.	Item	Description	
01	33597	base grey W2055D	
02-05	33546	disc ass. comb structured W2055D	
02	24383	disc lock Q2055D	
03	n/a	disc 2W055D	
04	24381	axle W2055D	
05	24382	axle gear W2055D	
06	32876	fragrance capsule key W2055D	
07	24534	grounding wire W2055D	
08	24379	enclosure gear motor grey W2055D	
09	22419	tank cap without gasket W2055D	
10	23805	Gasket W2055D	
11	22229	tank membran W2055D	
12	22239	pressure spring W2055D	

ACC = Accessories N/A = not available, prices see separate price list

Spare Parts

Pos.	Item	Description	
13	22420	tank tappet W2055D	
14	24668	water tank W2055D	
15	Acc	Ionic Silver Stick ISS A7017	
16	n/a	power cord W2055D	
17	n/a	spring for grounding W2055D	
18	n/a	screw gear motor W2055D	
19	24484	gear motor W2055D	
20	n/a	motor carrier W2055D	
21	24481	fan motor W2055D	
22	n/a	brush W2055D	
23	18319	sprocket for gear motor W2055D	
24	24372	grid W2055D	
25	33274	knob W2055D	

ACC = Accessories N/A = not available, prices see separate price list

Spare Parts

Pos.	Item	Description	
26	33415	front cover black AOS	
27	n/a	enclosure PCB grey W2055D (front)	
28	33313	main PCB W2055D	
29	n/a	enclosure PCB W2055D (back)	
30	n/a	middle part W2055D	
31	24376	fan blade 2055D	
32	24373	top W2055D	
33	33416	rear cover black W2055D	
34	n/a	display panel W2055D	

ACC = Accessories N/A = not available, prices see separate price list