

BONECO
healthy air

TRADITION SINCE 1956
 A SWISS COMPANY

**Spare-Parts
Air Washer W1355A**



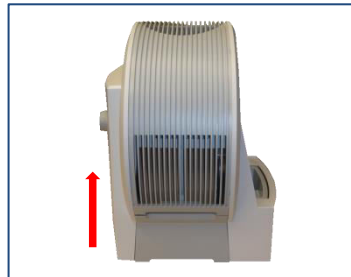
Dismount instructions



W1355A



Remove the tank



Take top of tub



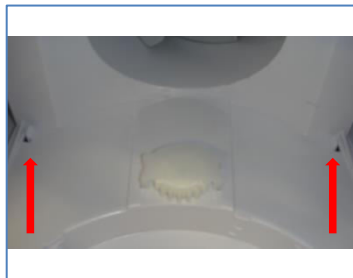
Top, tub, tank, disc



Carefully remove front



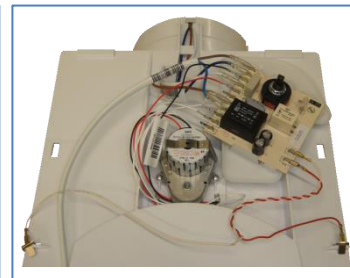
Place the unit upside down and resolve on both sides



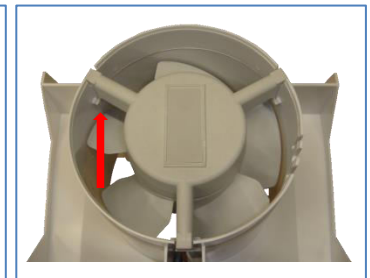
Turn the device and remove the tabs on both sides



Return the device and remove the two tabs on the back wall



Interior with print, gearmotor and contact sheet

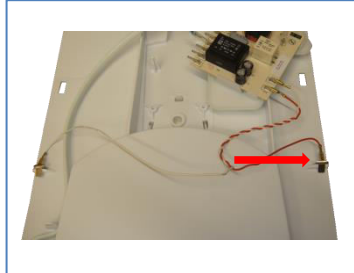


Remove the fan motor and remove from the print

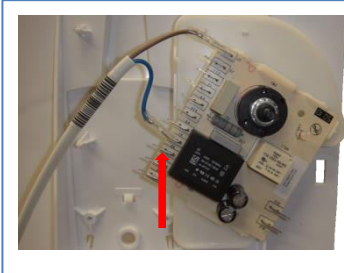
Dismount instructions



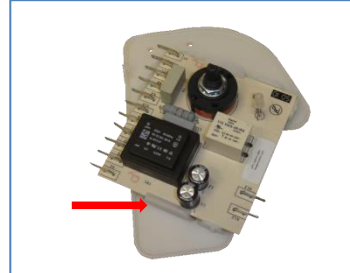
Loosen the two screws with geared motor



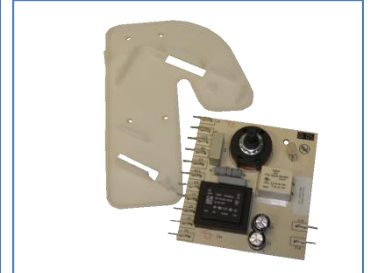
Remove sensor cable



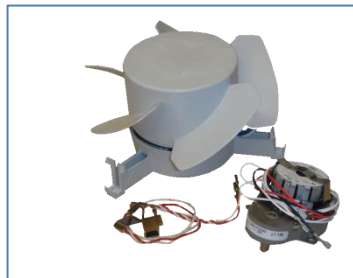
Remove the mains plug



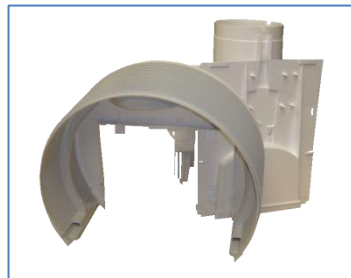
Take print from the housing



Print, print housing

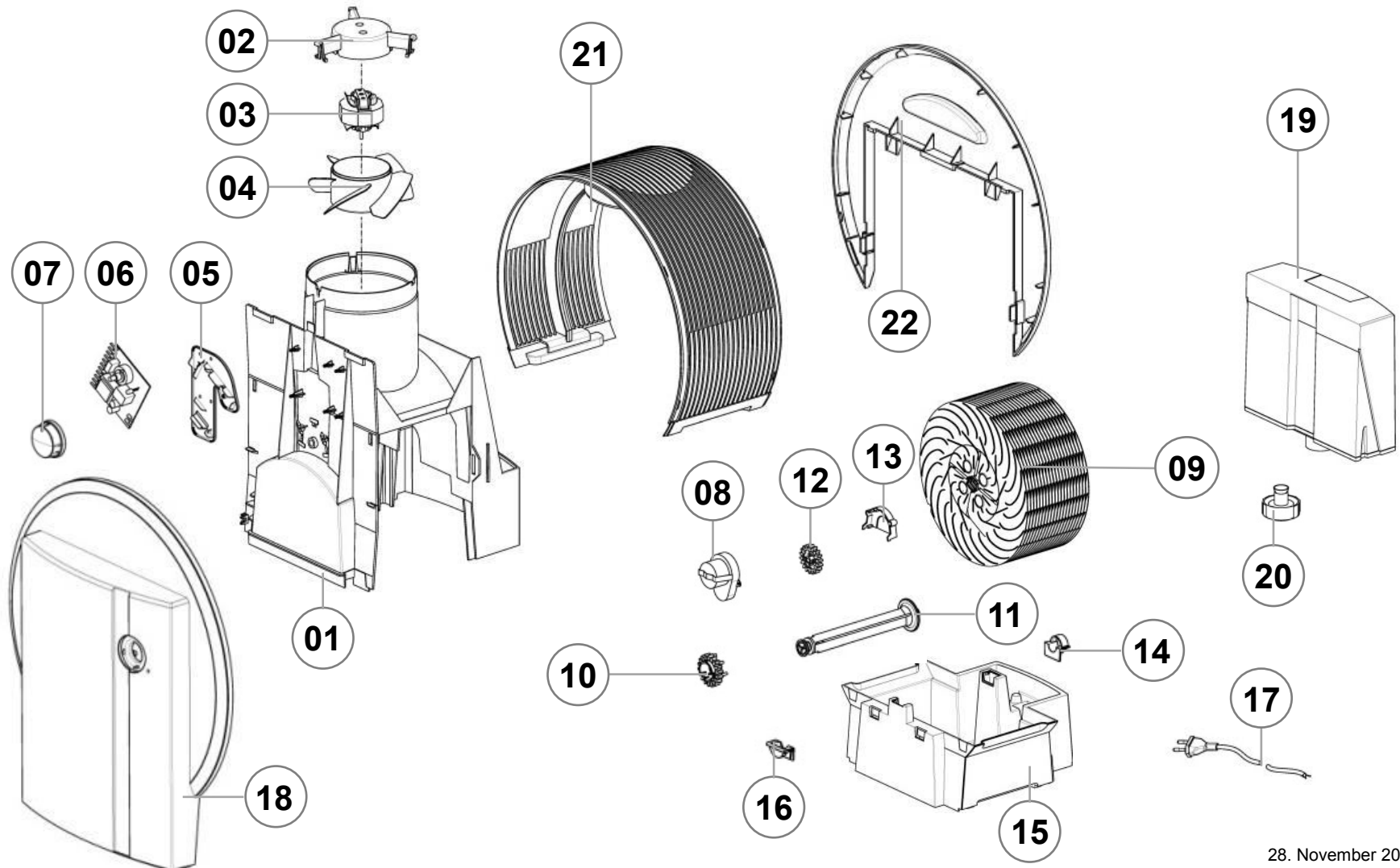


Fan motor, gear motor, sensor cable



Midsection, back, intake

Exploded - View



Spare Parts

Pos.	item	Description	
01	n/a	middle part W1355A	
02/03/04	23476	fan motor complete 230V W1355A	
02	n/a	motor holder W1355A	
03	n/a	Motor W1355A	
04	n/a	fan blade W1355A	
05	n/a	Print bracket W13355A	
06	32993	PCB 230V 1355N	
07	33221	switch head	
08	24484	gear motor W1355A	
09/10/11	33722	disc ass. comb structured W1355A	
10	18318	sprocket to hub W1355A	
11	18893	Axle W1355A	
12	18319	gear drive W1355A	

ACC = Accessories N/A = not available, prices see separate price list

Spare Parts

Pos.	item	Description	
13	18895	gearwheel cover W1355A	
14	18891	slide bearing back W1355A	
15	35400	base W1355A white	
16	19150	slide bearing front W1355A	
17	n/a	power cord W1355A	
18	33212	front panel 1355N white W1355A	
19	33213	water tank grey W1355A	
20	18919	tank cap W1355A	
21	18899	grid grey W1355A	
22	22440	rear panel white W1355A	

ACC = Accessories N/A = not available, prices see separate price list