

BONECO

healthy air



P500
SPARE PARTS

TRADITION SINCE 1956
 A SWISS COMPANY

Contents	Page
----------	------

Technical specification	03
-------------------------	----

Disassembling guide	04
---------------------	----

Explosive drawing	06
-------------------	----

Spare parts list	07
------------------	----

Technical specification

Performance	
Power supply	220-240V / 50 Hz
Power consumption (Standby)	0.28 W
Power consumption	30 W
Air flow	300m ³ /h
Noise level	< 33 db(A)
Suitable for room size up to	30m ² / 78m ³

Logistic information	
Product (L x W x H)	224 x 450 x 642mm
Gift box (L x W x H)	495 x 270 x 720mm
Masterbox (L x W x H)	505 x 280 x 735mm
Masterbox	1 pcs.
Pallet	12 pcs.
20"	285 pcs.
40"	585 pcs.
40" HC	585 pcs.

Weights	
Product (without filter)	7.45 kg
Gift box	1.18 kg
Packaging materials	1.80 kg

Disassembling guide



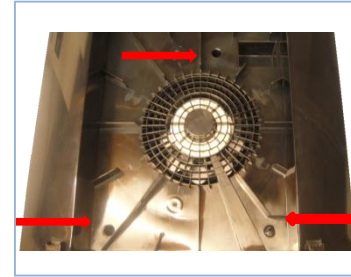
P500



Remove Front cover



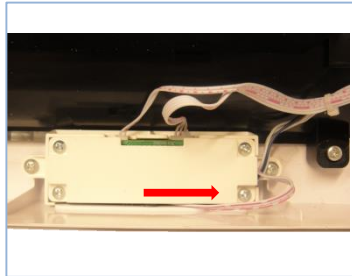
Remove filters



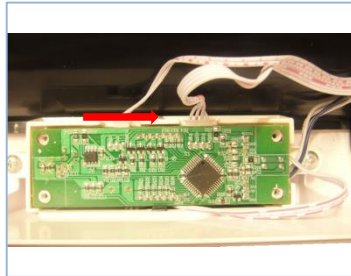
Remove these 3 screws from the front



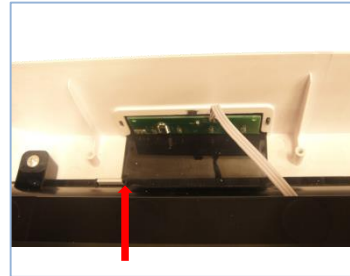
Remove these 4 screws from back



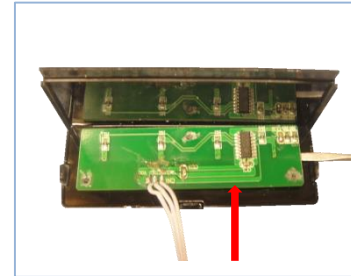
Remove the screws on PCB



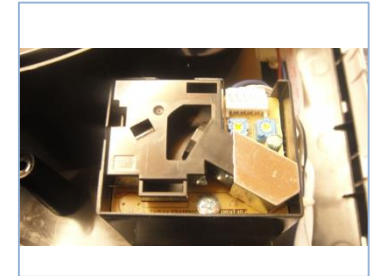
Detach the connection cables and take out the PCB



Carefully push out the Display plate from inside

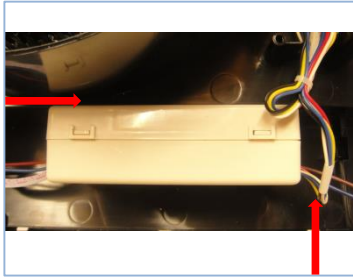


Carefully remove the Display plate from the PCB

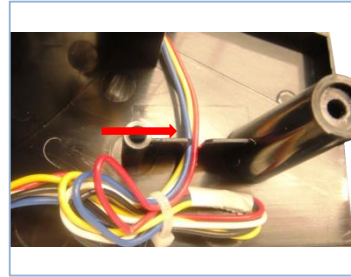


Remove particle sensor

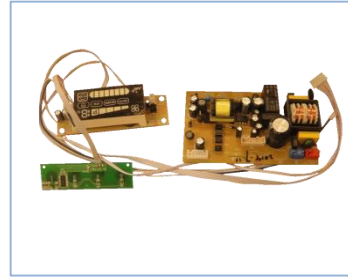
Disassembling guide



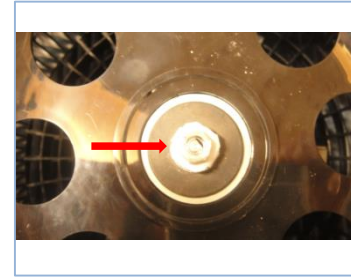
Remove the screws on the Power PCB and detach the cable



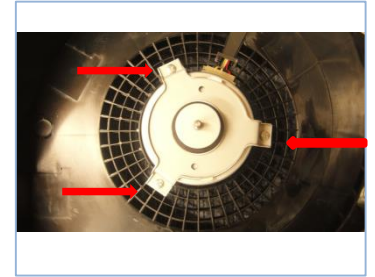
NOTE: when assembly back, the cables must be put into the designed slot



Display and Power PCB



Loose the screw on the fan blade and take it off



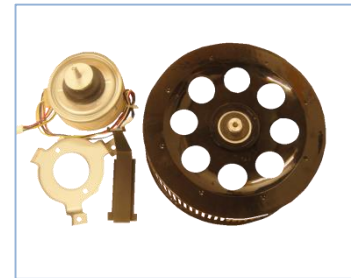
Remove these 3 screws on the Fan motor



Take out the Cable cover

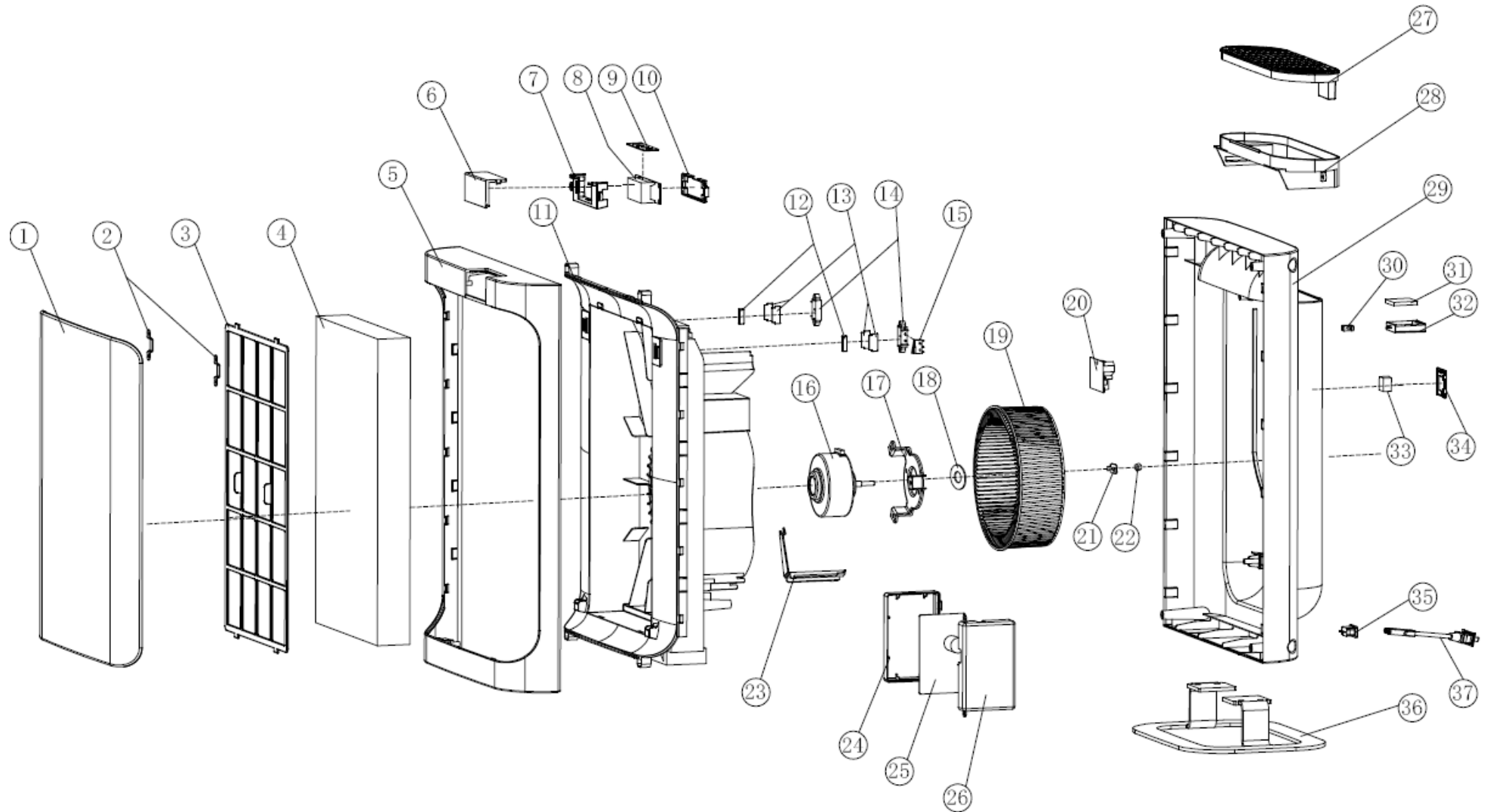


Remove the cover of the Fan motor and take out the Fan motor



Fan motor, Fan blade, Cable cover, Fan cover

Explosive drawing



Spare part list

Pos	Article	Description
01	41795	Front cover P500
02	N/A	Metal plate P500
03	41796	Pre-filter P500
04	ACC	Filter P500
05	N/A	Housing front P500
06	N/A	Display cover P500
07	N/A	Display-PCB holder front P500
08	41797	Display-PCB P500
09	41798	Control-PCB P500
10	N/A	Display-PCB holder backP500
11	N/A	Housing middle P500
12	N/A	Magnet P500
13	N/A	Magnet holder P500
14	N/A	Magnet cover P500
15	41799	Microswitch P500
16	41800	Fan motor P500
17	N/A	Fan cover P500

ACC = accessories N/A = not available, prices see separate price list

Spare part list

Pos	Article	Description
18	N/A	Washer P500
19	41801	Fan blade P500
20	41802	Particle sensor P500
21	N/A	Motor lock P500
22	N/A	Nut P500
23	N/A	Cable cover P500
24	N/A	Power-PCB holderP500
25	41803	Power-PCB P500
26	N/A	Power-PCB Cover P500
27	N/A	Grid P500
28	N/A	Cover P500
29	N/A	Housing back P500
30	N/A	Lock fragrance containerP500
31	N/A	Felt - Pad P500
32	41804	Fragrance container P500
33	N/A	Particle sensor seal P500
34	N/A	Particle sensor cover P500

