

BONECO
healthy air

TRADITION SINCE 1956
 A SWISS COMPANY

**Spare-Parts
Humidifier E2441 A**



Contents

Topic	Page
Dismount instructions	03
Exploded - View	05
Spare Parts	06

Dismount instructions



E 2441



Take down top



Take down splash guard,
mat and floating ring



Take swimming ring, mat
and splash protection from
the swimming Basket



Swimming ring, mat, splash
and float



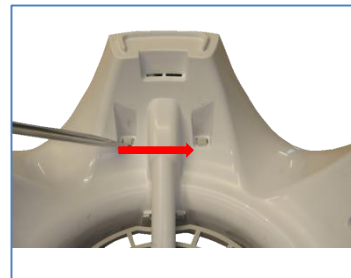
Take pan from the lower part



Turn lower part



Release tabs of the fan
motor

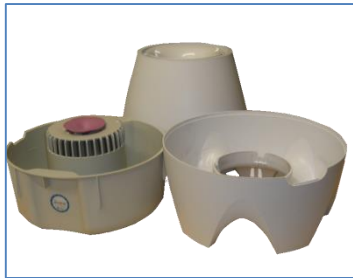


Loosen the two mounting tabs
of the Print



Turn lower part again and
take out the fan motor and
the print holder

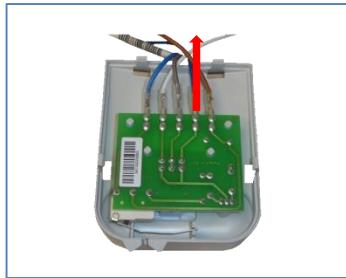
Dismount instructions



Top, bottom, tub



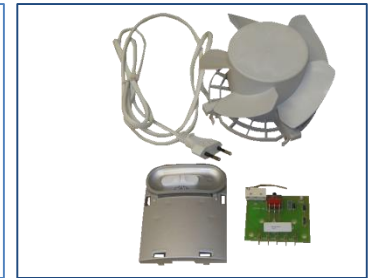
Remove the 4 mounting tabs of the Print



Loosen the fan motor cable and power cord

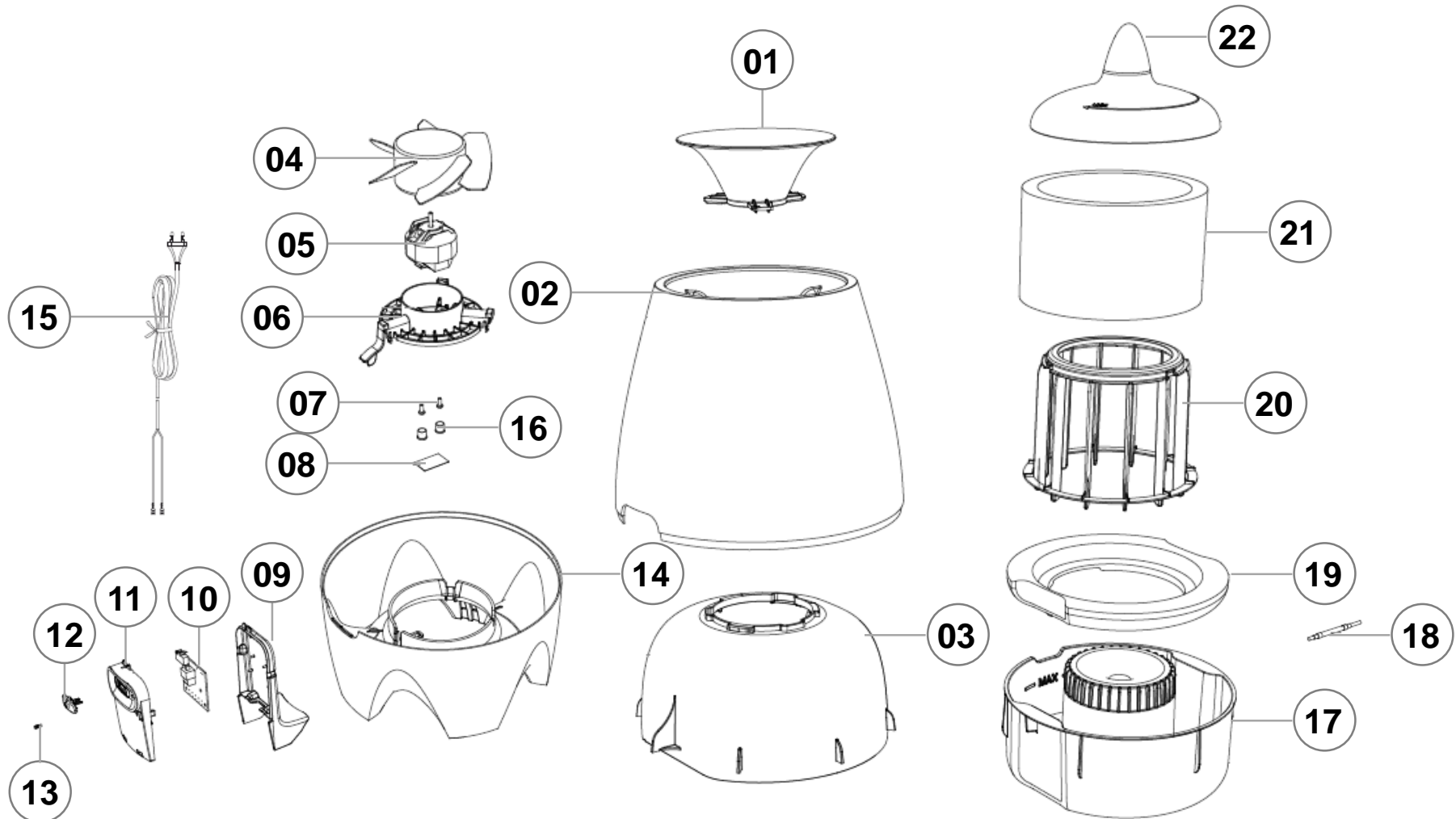


Take print from the housing



Fan motor with power cord, print housing, Print

Exploded - View



Spare Parts

Pos	Item	Description	
01	34080 24081	Hopper E2441A black Hopper E2441A white	
02	39949 39950	Top E2441A white Top E2441A black	
03	n/a	splash	
04/05/06	36663	fan group complete E2441A	
07	n/a	Motor mount screws E2441A	
08	n/a	Nameplate E2441A	
09	34091	Print housing E2441A grau	
10	35662	Main PCB E2441A	
11	41649 34406	Housing summary page Print E2441A painted silver Housing summary page Print E2441A ruthenium painted	
12	34092 34407	slide switch E2441A anthracite slide switch W2441A white	

Acc = Accessories n/a = not available, prices see separate price list

Spare Parts

Item	Item	Description	
13	n/a	indicator light	
14	35044 35045	lower part E2441A black lower part E2441A withe	
15	n/a	power cable E2441A	
16	n/a	cover screws E2441A	
17	35048	Tub E2441A	
18	Acc	ISS-Silver-Stick	
19	34086	Float E2441A	
20	34085	floating basket E2441A	
21	Acc	Evaporator mat E2441A	
22	34083 34084	float hood E2441 black float hood E2441 withe	

Acc = Accessories n/a = not available, prices see separate price list